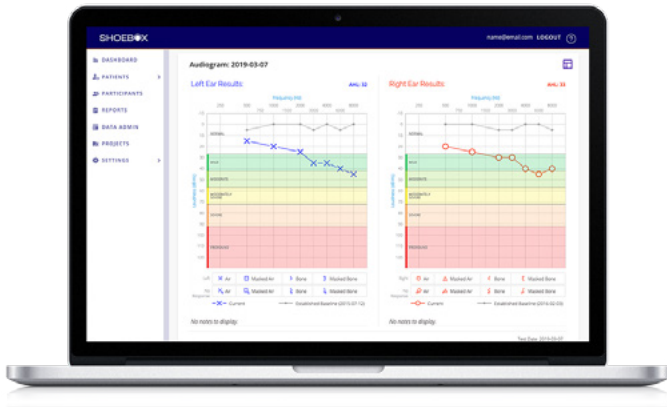


SHOEBOX Data Management

Paperless Patient, Employee, and Client Data Management

A cloud-based portal to archive, view, manage, and analyze hearing health data.



- ✓ Comprehensive individual summary reports
- ✓ Organize data by projects to more easily manage large programs or multiple tasks
- ✓ Import historical patient demographic data and test results
- ✓ OSHA reporting including Standard Threshold Shifts and Roster Reports
- ✓ HIPAA-compliant

The SHOEBBOX® Data Management platform is unmatched in its ability to administer patient demographic data and test results. It offers advanced filtering and reporting capabilities designed to help you adhere to your specific regulatory compliance requirements. Our Data Management system is a HIPAA-compliant web-based portal used to securely archive, view, manage, and analyse data and audiograms captured on the iPad or imported from legacy systems.

If you manage large-scale projects, Data Management provides an environment where information can be organized and viewed in meaningful ways. It enables a host of reporting and analysis functionality including summary reports, roster reports, and patient threshold shift reports. The system can even be used to gather and analyze data for research or investigational purposes.



Cloud Based

Securely archive and manage hearing health data



Scalable

Perfect for projects of all sizes – testing from 1 to 100's of iPads



Efficient

Automatically identify threshold shifts, consolidate data, generate reports

SHOEBOX Data Management Features

SHOEBOX Data Management	SHOEBOX Data Management PLUS
Web portal, accessible from browser	Web portal, accessible from browser
Automatic back-up from the iPads	Automatic back-up from the iPads
Secure, HIPAA-compliant storage services	Secure, HIPAA-compliant storage services
Centrally view the patient/employee data & results synced from the SHOEBOX iPad device in one complete list	Centrally view the patient / employee data & results synced from the SHOEBOX iPad device(s) in logical groupings (geographies, organizations)
Flexible search and filter capabilities for viewing data	Flexible search and filter capabilities for viewing data
Electronic data transfer and export of patient test results	Electronic data transfer and export of patient test results
	Easy import of patient lists from external sources for download to single or multiple SHOEBOX iPad devices
	Easy import of historical audiograms, including baselines
	Organize data on the portal into projects then synchronize patient lists to the iPads
	Define and maintain audiometric baselines for each patient
	Monitoring for threshold shifts for a variety of different regulations/standards
	<p>Comprehensive reports including:</p> <ul style="list-style-type: none"> • Individual patient summary reports • Clinical hearing threshold shift reports (CTCAE, Brock) • Employee / patient roster reports • Hearing conservation shift reports following OSHA and MSHA guidelines • Test schedule reports including baseline tests, annual tests, and retests
	Administrative control for assigning user access across projects