

SHOEBOX QuickTest

A Simple Solution for New Patient Acquisition



**QUICK AND SIMPLE
TEST FLOW**
Straightforward
results interpretation



VERSATILE
Configurable for your
workflow and testing
environment



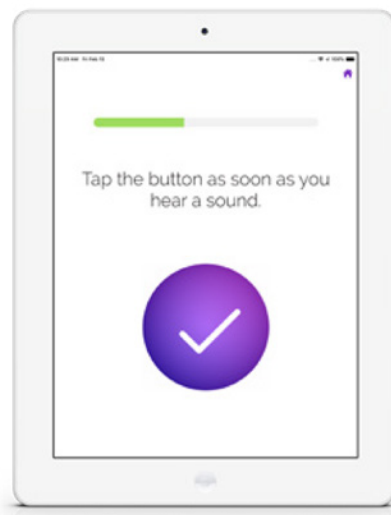
DATA-DRIVEN RESULTS
Categorizes hearing
levels to help clinics
triage more effectively

SHOEBOX® QuickTest is an easy-to-use hearing screening test on an iPad, designed to be completed in two minutes or less. Ideal for placement in high-traffic areas, it encourages screening to help identify and engage new, qualified patients. The test is highly customizable, allowing you to adapt it to your testing environment, process, and workflow. After assessing participants' hearing levels, it provides recommendations for the next steps in their hearing health journey.

With automatic syncing of results to our cloud-based portal, you can quickly and easily identify your best candidates for scheduling follow-up appointments.

SHOEBOX QuickTest:

- Has configurable testing options to suit your specific needs
- Has custom branding to promote your company and maintain consistency
- Supports 19 languages
- HIPAA Compliant
- Fleets of iPads can all be managed via the web portal
- Is compatible with DD65 transducers and most iPads



2024-11-07